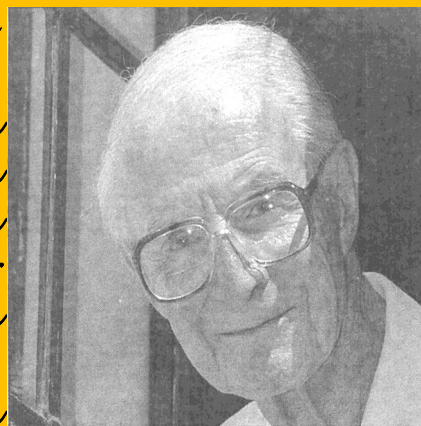


Joseph Gentilli Memorial Geography Award — 2021

Celebrating Excellence in Teaching Geography

The late Dr Gentilli, was a foundation and long-serving member of the Geography Department of UWA, as well as the foundation President of the Geographical Society of Western Australia, the precursor organization of GAWA. He was a Fellow of The Royal Geographical Society, the Royal Meteorological Society and a member of the American Meteorological Society. He wrote a number of books and hundreds of research papers. During his academic career he discovered that warm tropical water made its way through the Indonesian Archipelago and down the coast of W.A. forming the Leeuwin Current. He also conducted ground-breaking research on Italian immigration to W.A., Swiss immigration to Australia, and also found evidence of a hole in the ozone layer above Tasmania before it was formally acknowledged. Dr Gentilli claimed that many of his discoveries were due to his approach of 'looking for the unexpected'.



The Geographical Association of Western Australia (GAWA) is honoured to remember and recognise the late Dr Gentilli's contribution to Geography and his ongoing support since the foundation of GAWA through:

“The Joseph Gentilli Memorial Award for Excellence in Geographical Education”.

The Geographical Association of Western Australia invites nominations from schools for the **GAWA Award for Excellence in Geographical Education**. Known as the ‘**Joseph Gentilli Memorial Geography Award**’, this will be presented to a **member of GAWA** who has made an outstanding contribution to **Geographical Education**.

The GAWA award for Excellence in Geographical Education for 2021 carries a prize of **\$2,000** to the successful teacher/educator.

The recipient of the award will have recently made an outstanding contribution to Geography/Geographical Education in **one or more** of the following ways:

- **Classroom teaching.**
- **Development of geographical educational materials or resources.**
- **Professional development and peer support in geographical education.**
- **Contributions to the pedagogy of the discipline.**

Nominations must be made on the official **GAWA Nomination Form** (refer pages 2 and 3). The award nominee will be chosen by a panel composed of GAWA Management Committee Members. The panel may seek confidential evidence from the award nominee or nominator.

Nominations are now open and close on Thursday, 22nd July 2021

THE JOSEPH GENTILLI MEMORIAL AWARD 2021`

for

EXCELLENCE IN GEOGRAPHICAL EDUCATION

NOMINATION FORM—page 1

This form is to be completed by the nominator and signed by the nominee (please type or print clearly).

Name of Nominator	Position	Signature	Date

Contact 'phone #: Contact email:

I hereby nominate:

Name: _____ Position: _____

School Address: _____

Contact 'phone #: _____ Email: _____

I am a 2021 GAWA Member and agree to be nominated for the *Joseph Gentilli Award for Excellence in Geographical Education — 2021*

Signature of Nominee: _____ Date: _____

Nominations close Thursday, 22nd July 2021

Send nominations to: GAWA, PO Box 1252, Subiaco WA 6904

Or e-mail to: gawaadmin@westnet.com.au

Nomination Form—page 2

ENDORSEMENT

Name of Nominee: _____

Supporting written documentation (approximately 500 words — if insufficient space, attach a supplementary document. This must include the following:

1. The category or categories in which the person nominated has made an outstanding contribution.
2. A statement from the nominator indicating reasons/support for the nomination.

Note: If required, nominators must be willing to provide confidential evidence in relation to the nominated person.

Category/Categories of contribution to Geography/Geographical Education:

1. _____
2. _____
3. _____

Statement from Nominator:

This image shows a single sheet of white paper with horizontal ruling lines. The lines are evenly spaced and run across the width of the page. There is no text or other markings on the paper.

Signature of Nominee: **Date:**